



# Brigadier Type 3 Hose

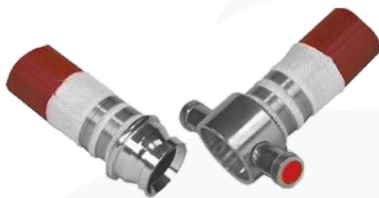
Our Brigadier Type 3 layflat fire hose is a general purpose all synthetic heavy duty layflat delivery hose complying with BS 6391 Type 3 and other international standards. The hose is a high quality Nitrile-synthetic rubber which is extruded through the weave giving a 'Unified' construction. External ribs offer further resistance to abrasion and ease of handling. This hose requires no drying after use.

## HOSE JACKET & LINING

The hose jacket is a 100% polyester high tenacity yarn with circular woven. The unified construction is made of a high quality Nitrile synthetic rubber. Resistant to ozone and to external contact with oil products. The inner lining guarantees a smooth surface and low friction loss.

## STANDARDS

BS 6391 Type 3, DIN 14 811, NEN 2242, prEN 1924 class 4.



BS Coupling wired in

## COUPLING

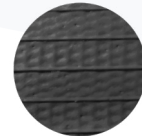
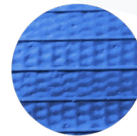
BS336 Instantaneous, Storz or all international coupling types wired-in for safety & security, with 1.6mm Stainless Steel wire.

## LENGTHS

All standard lengths can be supplied from stock, however Richards Hose specialise in the cutting and assembly of non-standard lengths to satisfy customers' individual requirements. Max change in length 4%, max change in diameter 4%.

## CHARACTERISTICS

- A heavy duty hose – very high abrasion resistance and extremely long service life.
- Resistant to oil, fuel and chemical products.
- Lightweight and flexible – kink resistant.
- Minimum maintenance and easy to clean.
- Cold resistant to – 30 °C.
- Heat resistant up to + 80 °C.
- Easy to repair - repair material and vulcanizer on request.



Standard colours

Internal Diameter		Weight	Burst Pressure	Working Pressure Safety Ratio*		Wall Thickness
mm	inch	g/m	bar	2:1 bar	3:1 bar	mm
19	¾	190	60	30	20	1.70
25	1	220	60	30	20	1.70
32	1 ¼	280	60	30	20	2.10
38	1 ½	330	60	30	20	2.10
42		350	60	30	20	2.10
45	1 ¾	380	60	30	20	2.10
52	2	440	50	25	17	2.30
64	2 ½	570	50	25	17	2.30
70	2 ¾	620	50	25	17	2.30
75	3	700	50	25	17	2.60
90	3 ½	990	40	20	13	2.60
102	4	1120	40	20	13	3.00
110	4 ⅓	1350	40	20	13	3.00
125	5	1430	30	15	10	3.00
152	6	1750	30	15	10	3.00
204**	8	2500	24	12	8	3.50
250**	10	3000	24	12	8	3.50

\*maximum recommended working pressure of the hose, or maximum working pressure of the attached coupling whichever is the lower \*\* available in black only