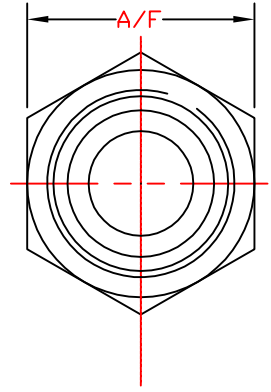
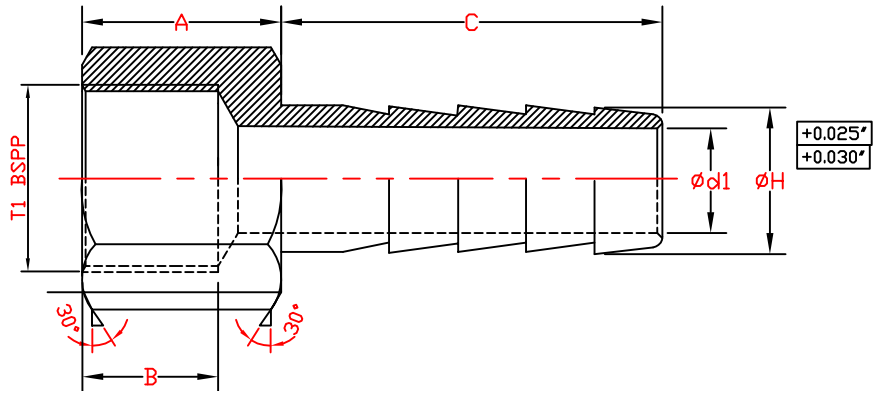


NO.	ALTERATIONS	DATE	SIGN	CHQD	APPD	MODF. NOTE NO.
-----	-------------	------	------	------	------	----------------



Part No.	T1	A/F	L	A	C	B	Ød1	ØH
FFH02/03	1/8"	1/2"	32	12	20	10	4	3/16"
FFH02/04	1/8"	1/2"	37	12	25	10	5	1/4"
FFH02/05	1/8"	1/2"	37	12	25	10	6	5/16"
FFH02/06	1/8"	1/2"	37	12	25	10	7	3/8"
FFH04/03	1/4"	0.65"	41	16	25	14	4	3/16"
FFH04/04	1/4"	0.65"	41	16	25	14	5	1/4"
FFH04/05	1/4"	0.65"	41	16	25	14	6	5/16"
FFH04/06	1/4"	0.65"	41	16	25	14	7	3/8"
FFH04/08	1/4"	0.65"	41	16	25	14	10	1/2"
FFH06/04	3/8"	3/4"	43	18	25	15	5	1/4"
FFH06/05	3/8"	3/4"	43	18	25	15	6	5/16"
FFH06/06	3/8"	3/4"	43	18	25	15	7	3/8"
FFH06/08	3/8"	3/4"	56	18	38	15	10	1/2"
FFH08/04	1/2"	1"	46	21	25	16	5	1/4"
FFH08/05	1/2"	1"	46	21	25	16	6	5/16"
FFH08/06	1/2"	1"	46	21	25	16	7	3/8"
FFH08/08	1/2"	1"	59	21	38	16	10	1/2"
FFH08/10	1/2"	1"	59	21	38	16	13	5/8"
FFH08/12	1/2"	1"	59	21	38	16	15	3/4"
FFH08/16	1/2"	1"	59	21	38	16	20	1"
FFH12/06	3/4"	1.25"	60	22	38	20	7	3/8"
FFH12/08	3/4"	1.25"	60	22	38	20	10	1/2"
FFH12/10	3/4"	1.25"	60	22	38	20	13	5/8"
FFH12/12	3/4"	1.25"	60	22	38	20	15	3/4"
FFH12/16	3/4"	1.25"	60	22	38	20	20	1"
FFH16/06	1"	1.5"	64	26	38	23	7	3/8"
FFH16/08	1"	1.5"	64	26	38	23	10	1/2"
FFH16/10	1"	1.5"	64	26	38	23	13	5/8"
FFH16/12	1"	1.5"	64	26	38	23	15	3/4"
FFH16/16	1"	1.5"	64	26	38	23	20	1"
FFH16/20	1"	1.5"	64	26	38	23	26	1.1/4"

Note :-

All sharp corners to be round off or chamfered to 0.5 x 45°
 All dimension are in mm unless otherwise specified.
 Gen. tolerance : ±0.15mm