

Elite Type 2 Fire Hose

Our Elite layflat type 2 fire hose is a general purpose all synthetic layflat delivery hose complying with BS 6391 Type 2 and other international standards. The hose is a two-component system consisting of a black SBR synthetic rubber inner lining and a synthetic polyester outer jacket, bonded together with NBR-synthetic adhesive.

HOSE JACKET

The hose jacket is a 100% polyester high tenacity yarn with circular woven, warp threads 2 ply twisted, plain weave. Standard colour red or blue.

HOSE LINING

The hose lining and cover is a two component system consisting of a black SBR synthetic rubber inner lining and a synthetic polyester outer jacket, bonded together with NBR-synthetic adhesive. Resistant to ozone and to external contact with oil products. The lining guarantees a smooth surface and low friction loss.

COUPLING

BS336 Instantaneous, Storz or all international coupling types wired-in for safety & security, with 1.6mm Stainless Steel wire.

STANDARDS

BS 6391 Type 2 (45 bar) and many other International Standards.

LENGTHS

Standard and non-standard lengths up to 100 metres. Maximum loose hose length 300 metres made to order. Max change in length 3%, max change in diameter 3%.

CHARACTERISTICS

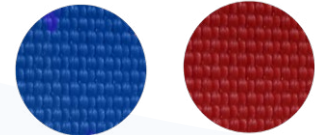
- Produced with very low twist.
- Good abrasion resistance and long service life.
- External resistance to oil, fuel and chemical products, low friction loss.
- Ageing and ozone resistant - weather resistant.
- Lightweight and flexible – kink resistant.
- Minimum maintenance and easy to clean.
- Cold resistant to – 30 °C.
- Heat resistant up to + 80 °C.
- Easy to repair - repair material and vulcanizer on request.



Hose Construction: Jacket, NBR- synthetic adhesive and NBR -synthetic rubber



BS Coupling wired in



Standard colours

Internal Diameter		Weight g/m	Burst Pressure bar	Working Pressure Safety Ratio*		Wall Thickness mm
mm	inch			2:1 bar	3:1 bar	
19	¾	120	45	22.5	15	1.30
25	1	140	45	22.5	15	1.30
32	1 ¼	170	45	22.5	15	1.30
38	1 ½	200	45	22.5	15	1.40
42		230	45	22.5	15	1.40
45	1 ¾	240	45	22.5	15	1.40
52	2	280	45	22.5	15	1.50
64	2 ½	380	45	22.5	15	1.50
70	2 ¾	450	45	22.5	15	1.50
75	3	500	45	22.5	15	1.60
90	3 ½	590	30	15	10	1.70
102	4	660	30	15	10	1.70
110	4 ⅓	760	25	13	8	1.70
125	5	880	20	10	7	1.80
152	6	1000	20	10	7	1.80

*maximum recommended working pressure of the hose, or maximum working pressure of the attached coupling whichever is the lower